



Energy Imbalance Market (EIM) Readiness

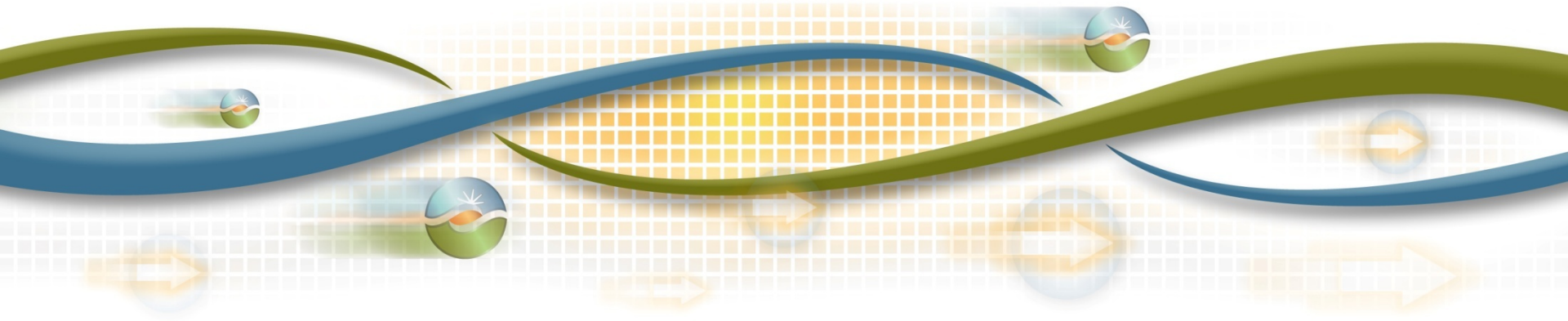
Janet Morris

Director, Program Management Office

EIM Governing Body Meeting

General Session

August 30, 2016



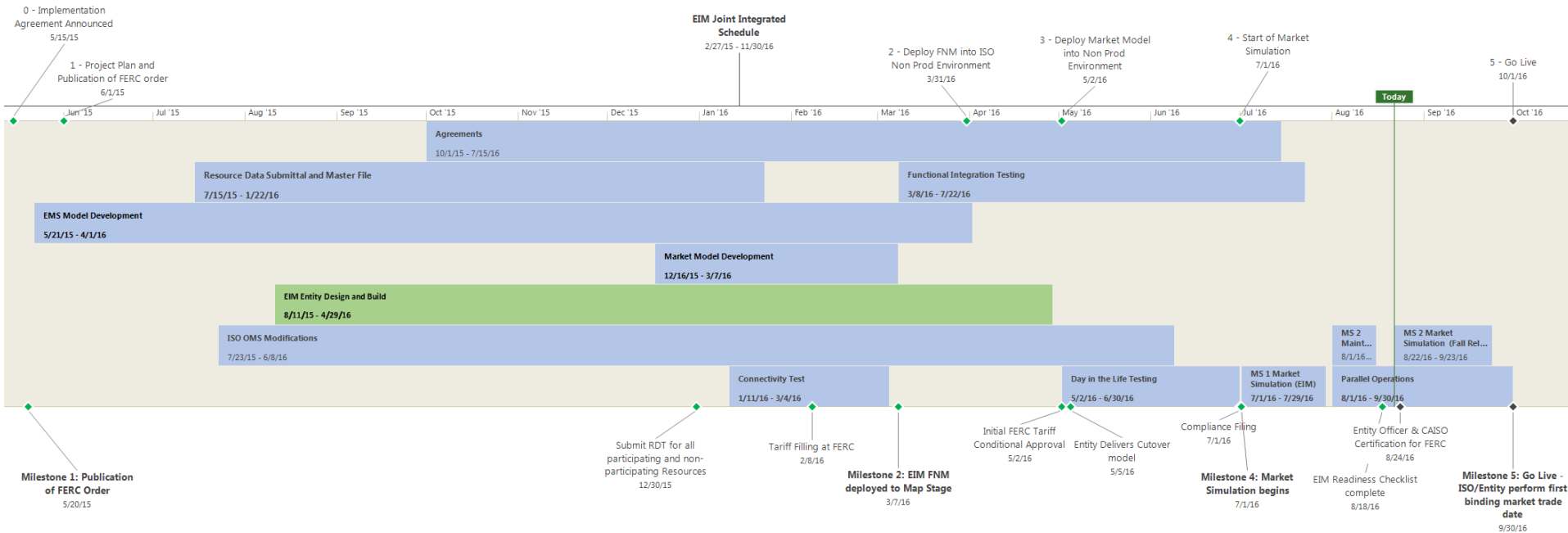
The EIM readiness criteria ensures that the EIM Entity is prepared for binding market operations

- The ISO collaborated with stakeholders to develop 34 readiness criterion across all areas of implementation.
- The metrics and criteria are defined in the ISO tariff and the thresholds are found in the EIM Business Practice Manual (BPM).
- Certification must be filed 30 days in advance of binding implementation.
- In June 2016, FERC issued an order accepting our NV Energy readiness filing for informational purposes. In the order FERC confirmed that future readiness filings are informational only and will not be noticed for comment.

The EIM implementation process is focused on operational readiness

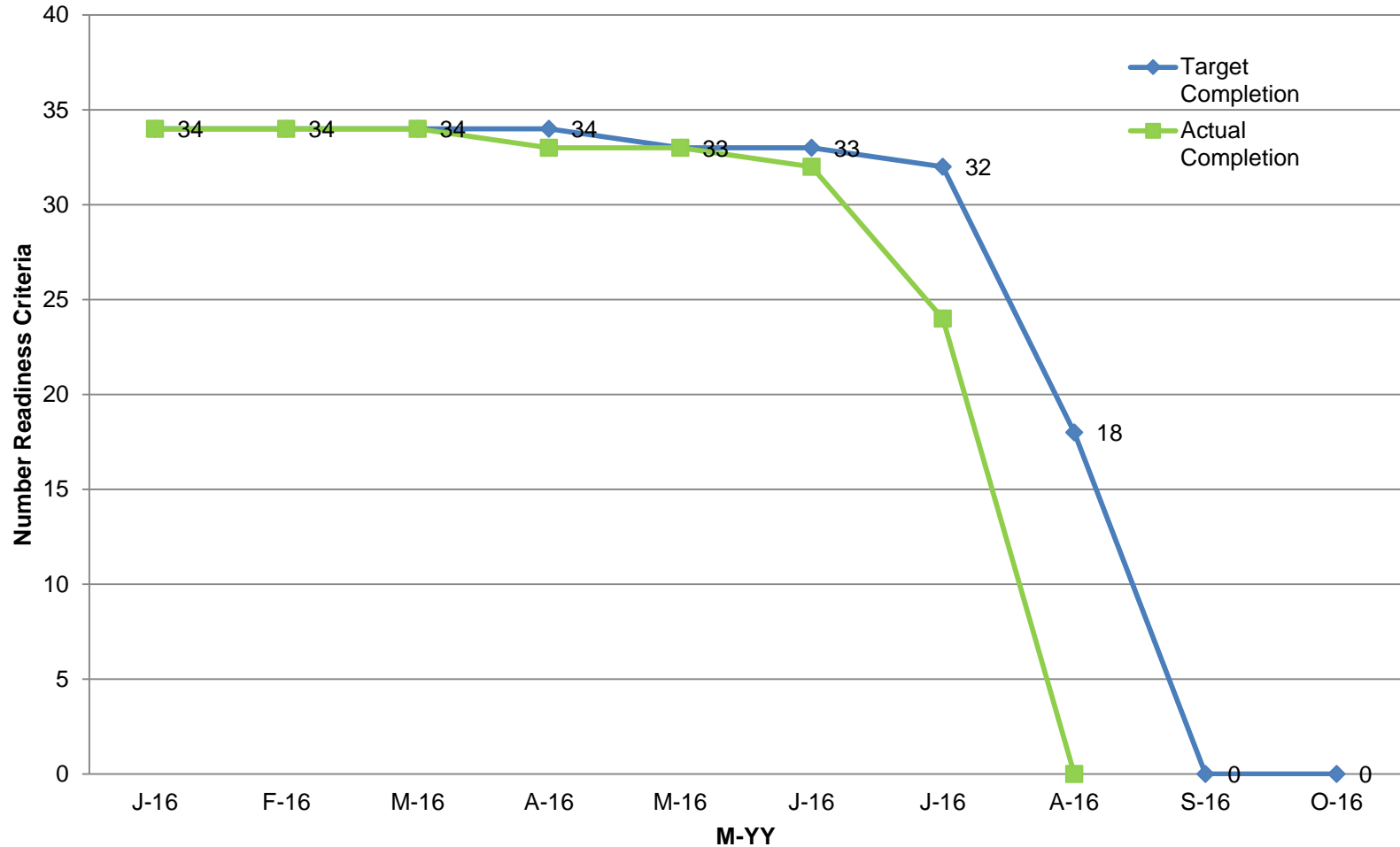
- The implementation typically requires eighteen months, involving several work streams.
- The EIM Entity's full network model is integrated with the ISO's full network model.
- All agreements must be in place in order to provide system access for integration and system testing.
- Data exchange is validated with the "day in the life testing" during the two months prior to market simulation.
- One month of market simulation determines readiness for parallel operations, which is conducted for two months prior to production.

APS and PSE have completed their implementation work and entered parallel operations on August 1



APS and PSE met all readiness criteria and certified on August 24 and 26 respectively, ahead of target completion

Readiness Criteria Progress



Portland General Electric (PGE) implementation is on track for Fall 2017

- Completed EIM Entity scheduling coordinator agreement.
- Identified and verified all PGE EIM participating resources.
- PGE full network model ready for ISO integration.
- PGE will be effective on October 1, 2017.

Idaho Power Company (IPC) implementation is planned for Spring 2018

- Implementation agreement filed and approved by FERC. The implementation kickoff meeting held in Boise and project plan finalized.
- IPC is filing with the IPUC in August.
- IPC initial discussions on resource modeling are underway. The full network model export planned for late September 2016.
- IPC will be effective on April 1, 2018.